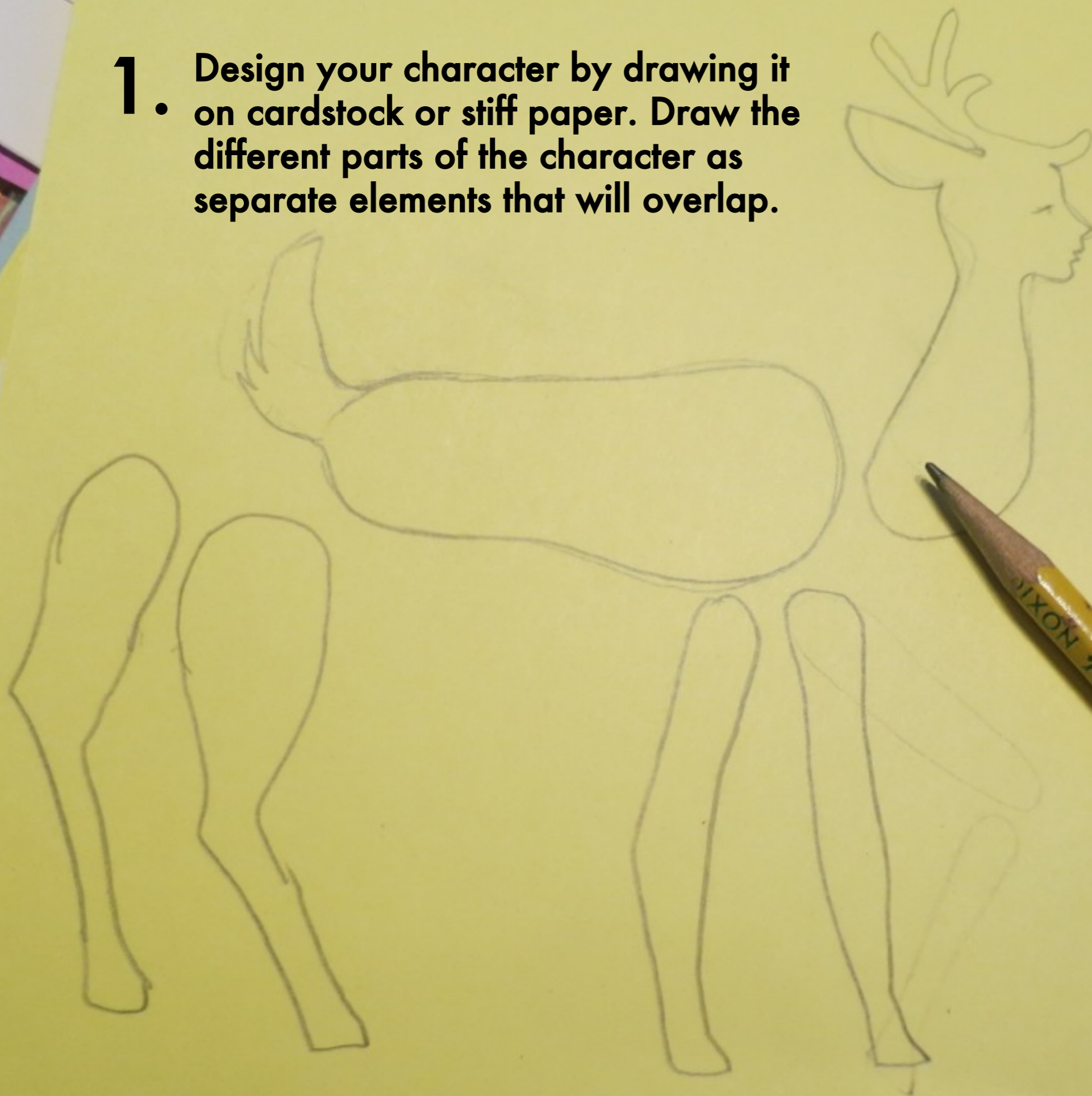


Invisible thread-and-tape hinges for cut-out puppets

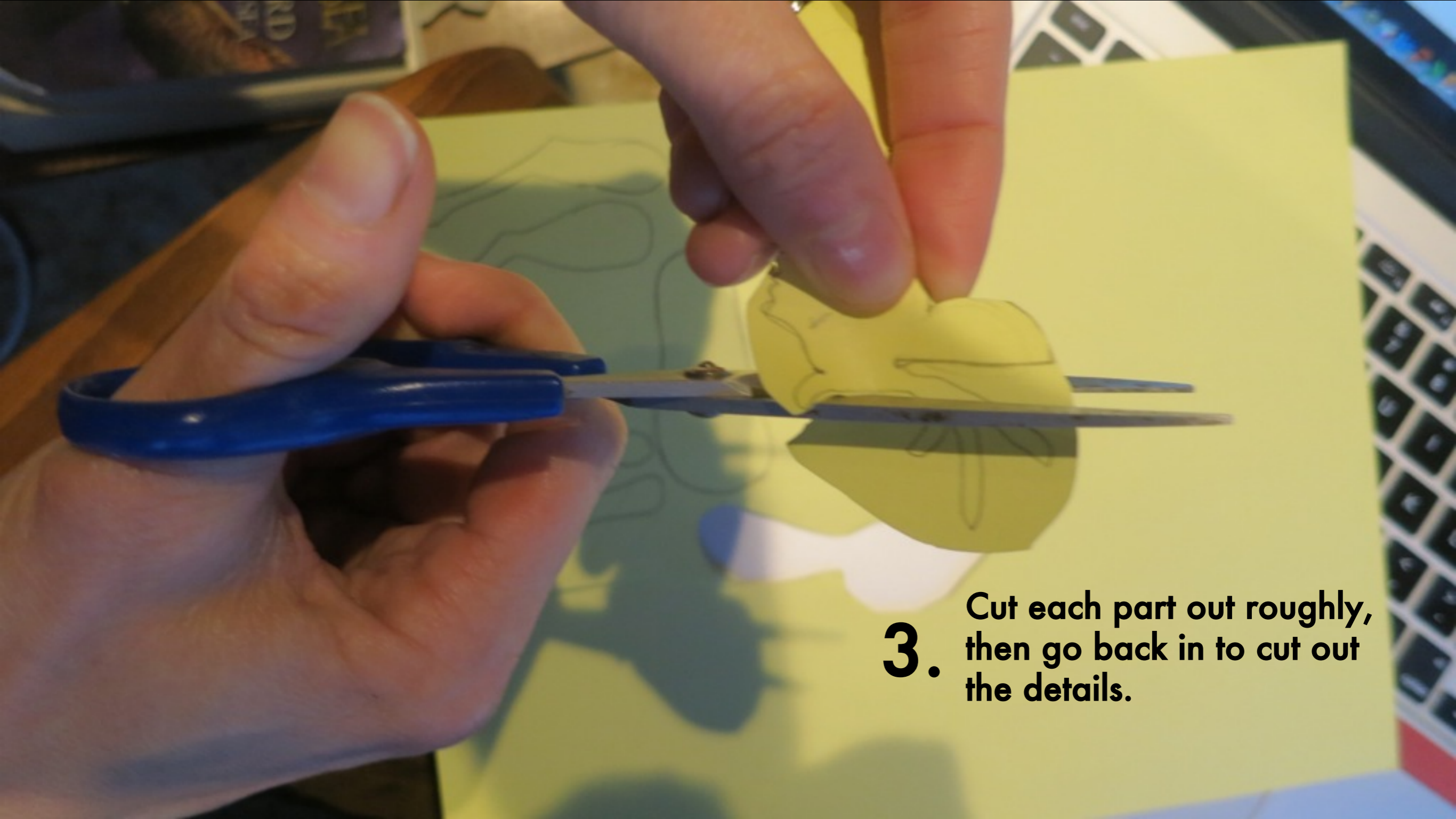
by Lynn Tomlinson

1. Design your character by drawing it on cardstock or stiff paper. Draw the different parts of the character as separate elements that will overlap.



2. Cut out the character.



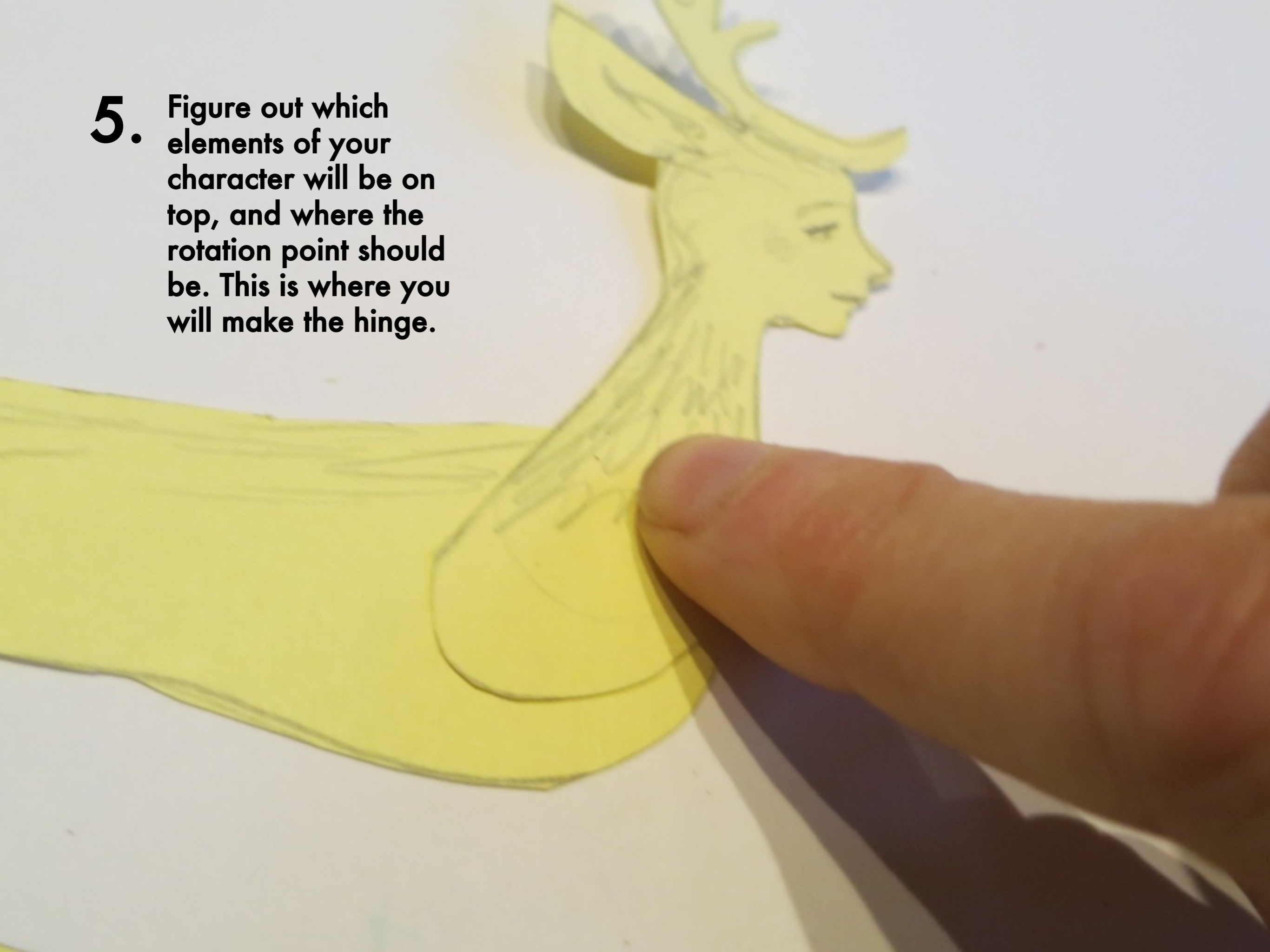


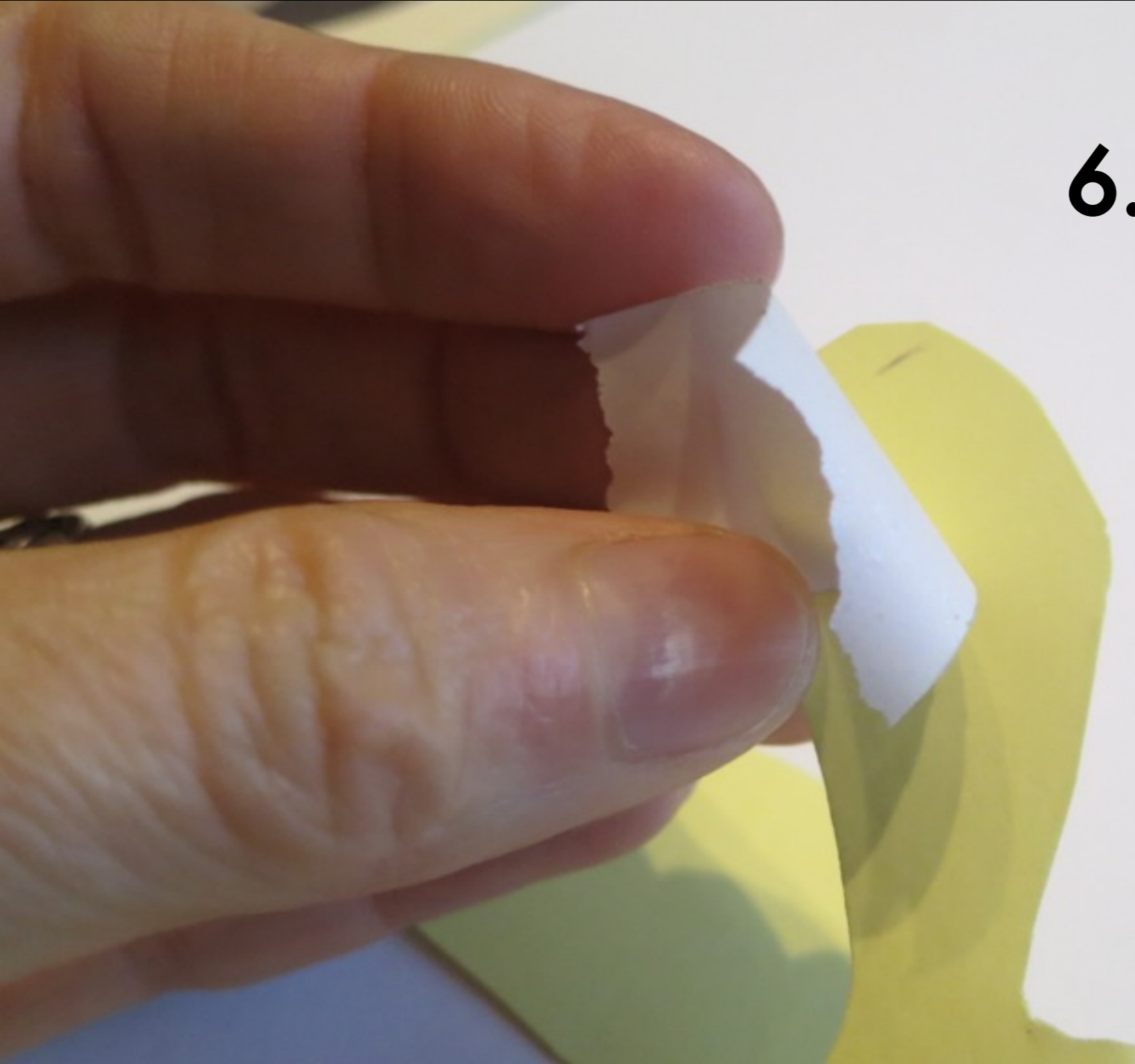
3. Cut each part out roughly, then go back in to cut out the details.

4. When you cut, try to turn the paper instead of turning the scissors.



- 5.** Figure out which elements of your character will be on top, and where the rotation point should be. This is where you will make the hinge.



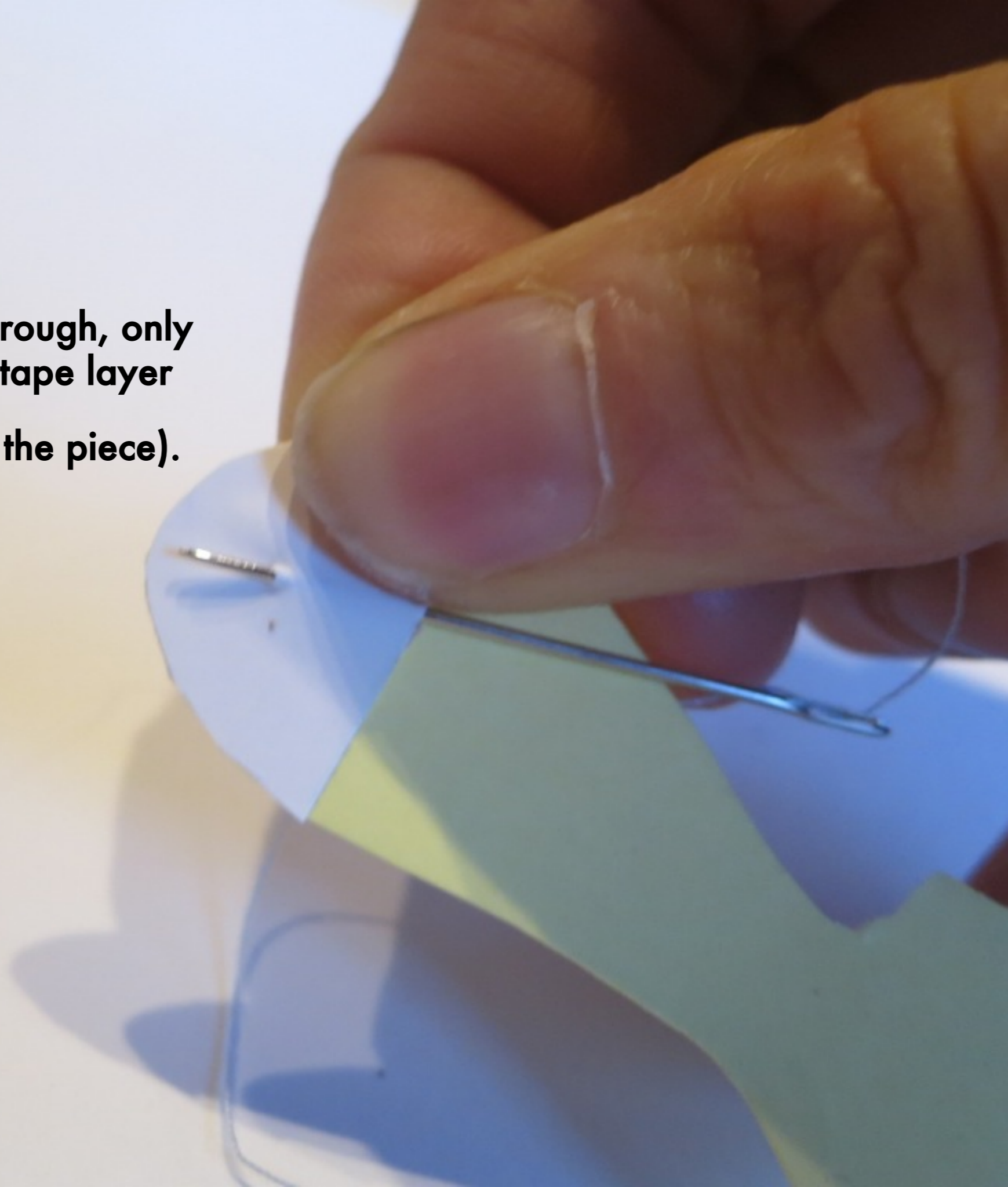


- 6.** Put tape on the back side of the top piece. Use masking tape or artist's tape.



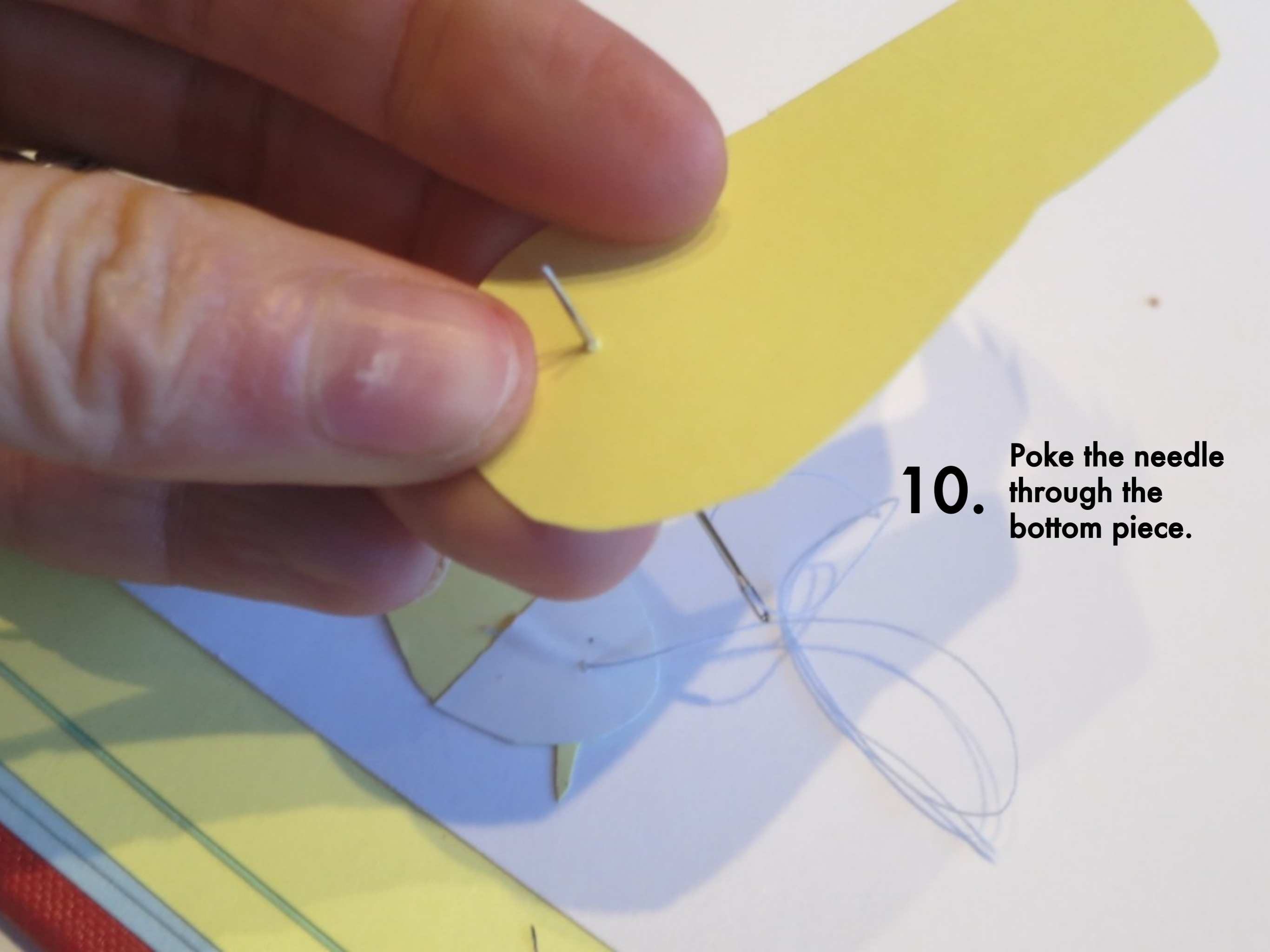
- 7** • Trim the tape closely to the shape of the element.

8. Poke the needle through, only going through the tape layer (this is the back of the piece).



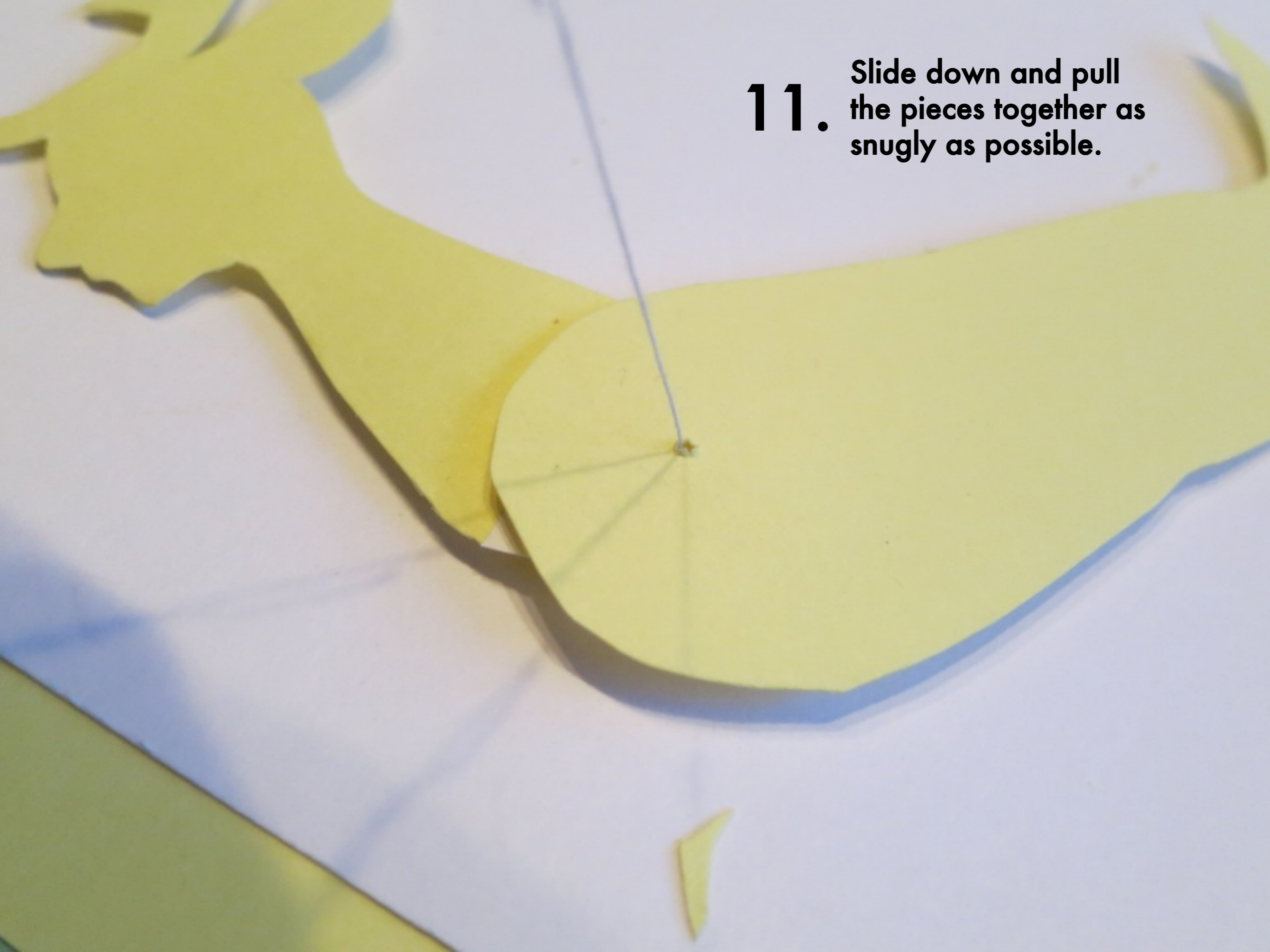


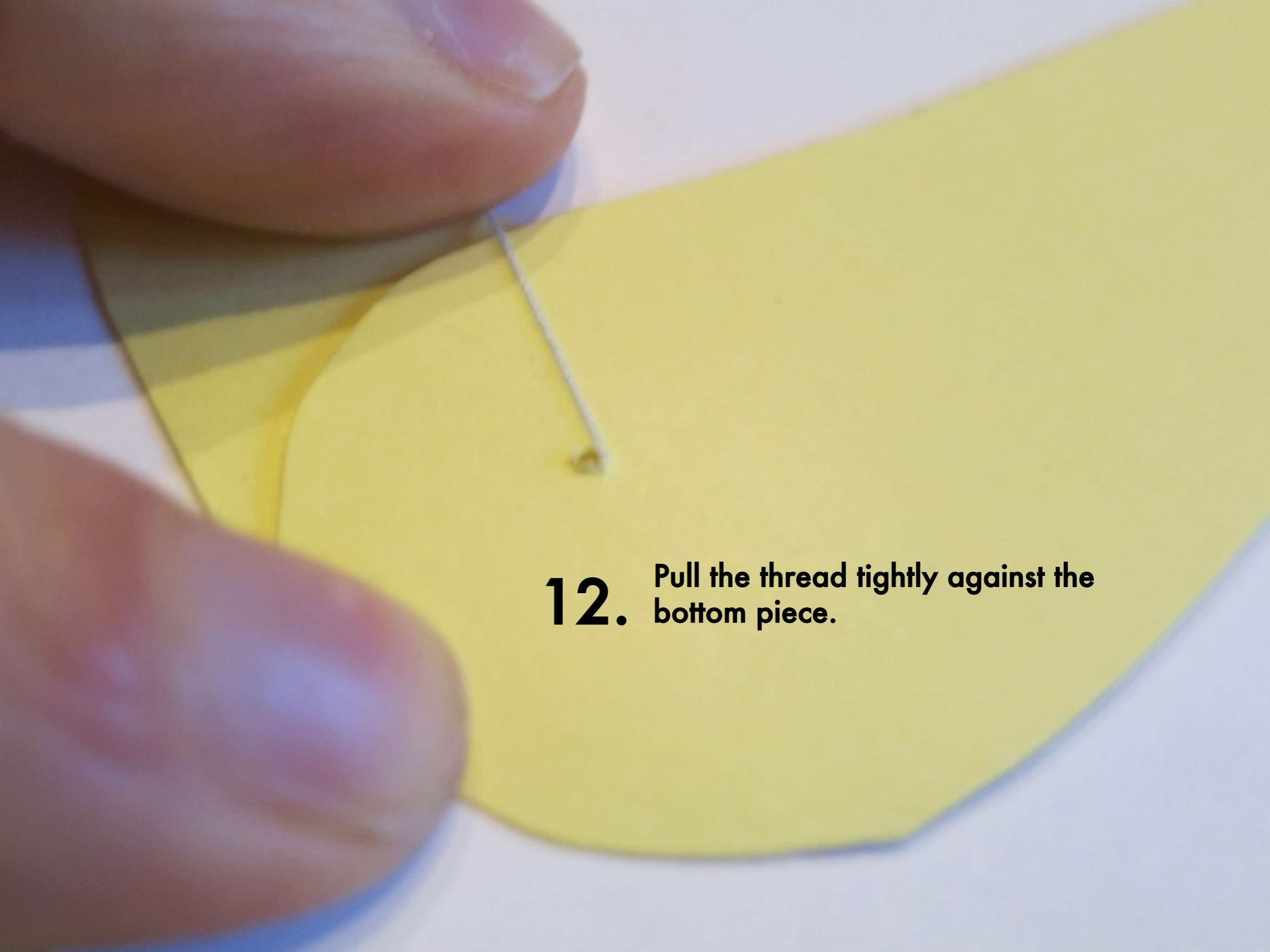
9. Rub the tape down firmly with your fingernail.



10. Poke the needle through the bottom piece.

11. Slide down and pull the pieces together as snugly as possible.





12. Pull the thread tightly against the bottom piece.



13. Tape the thread down and pull it taught as you rub the tape down.

14. Snip off thread.





- 15.** Flip the paper puppet over so the top side is up. You have made an invisible thread hinged cut-out puppet!